

**AMERICAN
RACER**®

Racing Tires From Race Tires America



A Division of Specialty Tires of America

C A T A L O G

RACE TIRES AMERICA®



WARNING: All tires are designed to be used on wheels that are manufactured to T&RA specifications and tolerances. Use of these tires on wheels that do not meet T&RA standards can cause assembly to fail and burst with explosive force sufficient to cause serious personal injury or death.

CONTENTS

Late Model Dirt.....	1	Mini Cup.....	4
Late Model Asphalt.....	2	Mini Modified, Mini Sprint, Mini Stock, Pro-4 Asphalt.....	5
Modified Asphalt.....	2	Micro Sprint.....	5
Road Racing 15" DIA/Formula V/Pro 4.....	2	Cage Kart.....	5
Sprint Car /Modified.....	3	D.O.T. Street Tires.....	6
Midget Dirt /Mini Stock Dirt.....	4	Tread Patterns - Race Tires.....	7,8
Midget Asphalt.....	4	Race Tire Distributors.....	9
Formula Ford.....	4		

NO WARRANTY POLICY

RACE TIRES AMERICA ("RTA") OFFERS RACING TIRES UNDER THE AMERICAN RACER® BRAND FOR SALE UPON THE TERMS AND THE CONDITIONS CONTAINED IN THIS DISCLAIMER OF LIABILITY. BECAUSE OF THE MANY VARIED AND DIFFERENT CONDITIONS TO WHICH RACE TIRES ARE EXPOSED AND BECAUSE OF THE MANNER IN WHICH RACING IS CONDUCTED, RTA MAKES ABSOLUTELY NO WARRANTY, EXPRESSED OR IMPLIED, OF MERCHANTABILITY OR OF FITNESS FOR A GENERAL OR PARTICULAR PURPOSE IN CONNECTION WITH ANY OFFER FOR SALE OR SALE OF RACE TIRES BY RTA. ALL RACE TIRE AMERICA AMERICAN RACER RACING TIRES ARE SOLD "AS IS."

New, unused tires exhibiting a defect in workmanship or materials, as verified by RTA's examination, will be issued a credit equal to RTA's distributor price. To qualify for a credit, the tire must have a manufacturing date within twelve (12) months of the tire's return to RTA.

ALL AMERICAN RACER RACING TIRES, INCLUDING "D.O.T." MARKED TIRES, ARE DESIGNED FOR RACING PURPOSES ONLY AND ARE NOT TO BE OPERATED ON PUBLIC STREETS, ROADS, OR HIGHWAYS. American Racer "D.O.T." marked tires have passed D.O.T. minimum requirements for sidewall identification, labeling, and performance; however, racing tires have reduced skid depth or soft compounds designed for racing on dirt or asphalt closed oval tracks. Racing compounds and tread depths give reduced tread life and are not suitable for highway or street use.

WARNING

DO NOT, UNDER ANY CIRCUMSTANCES, MOUNT ANY AMERICAN RACER TIRE ON A WHEEL THAT DOES NOT MEET TIRE AND RIM ASSOCIATION STANDARDS. USE OF AMERICAN RACER TIRES ON WHEELS THAT DO NOT MEET TIRE & RIM ASSOCIATION STANDARDS CAN CAUSE THE ASSEMBLY TO FAIL AND BURST WITH EXPLOSIVE FORCE SUFFICIENT TO CAUSE SERIOUS PERSONAL INJURY OR DEATH. AMERICAN RACER TIRES SOLD BY RTA ARE INTENDED TO BE USED EXCLUSIVELY ON TIRE RIMS DESIGNED AND MANUFACTURED TO COMPLY WITH TIRE & RIM ASSOCIATION (T&RA) STANDARDS AND SPECIFICATIONS. Any person using American Racer racing tires on wheels that do not meet T&RA standards and specifications or on damaged wheels assumes responsibility for these dangerous actions and agrees to reimburse RTA (and its affiliated companies) for all loss, damage or cost it may suffer because of such actions. Wheel standards and specifications can be obtained by writing to: **Tire & Rim Association, 175 Montrose West Avenue, Suite 150, Copley, Ohio 44321** or by consulting your rim manufacturer.

TIRE MOUNTING INSTRUCTIONS - TIRE MOUNTING MUST BE PERFORMED BY SPECIALLY TRAINED PERSONNEL USING PROPER TOOLS AND PROCEDURES. FAILURE TO FOLLOW SAFE MOUNTING PROCEDURES CAN RESULT IN FAULTY POSITIONING OF THE TIRE AND CAUSE THE ASSEMBLY TO BURST WITH EXPLOSIVE FORCE SUFFICIENT TO CAUSE SERIOUS PERSONAL INJURY AND DEATH. CLEAN RIM AND LUBRICATE BEADS WITH RUBBER LUBRICANT. ALWAYS LOCK RIM ON MOUNTING MACHINE OR PLACE ASSEMBLY IN SAFETY CAGE. USE AIR HOSE WITH CLIP ON CHUCK AND EXTENSION AIR GAUGE. NEVER EXCEED 40 PSI TO SEAT BEADS ON RIM. EXCESSIVE AIR PRESSURE CAN DAMAGE THE TIRE AND CAUSE IT TO VIOLENTLY BLOW OFF OF THE WHEEL.

CHEMICALLY ALTERING TIRES - Race Tires America does not authorize or permit: (1) chemical alteration of the tread carcass and/or tread compound, such as tire "soaking"; (2) use of tread "softener"; or (3) the physical defacement (removal, altering or covering), of tire sidewall markings in any manner. Failure to comply with this warning could result in premature or catastrophic tire failure that may result in serious injury or death.

RACE TIRES AMERICA®

LATE MODEL / MODIFIED DIRT

TIRE SIZE	TREAD TYPE	TREAD WIDTH	SECTION WIDTH	APPROX. DIA	APPROX. CIRC.	DESIGN RIM	WT.
Economy							
82.0/8.0-15DT	F	8.0	10.7	26.1	82	8	18.0
84.0/8.0-15DT	F	8.0	10.8	26.7	84	8	19.0
86.0/8.0-15DTN	F	9.0	10.7	27.4	86	8	18.0
26.5/8.0-15DT	F	9.0	10.8	26.7	84	8	17.8
27.5/8.0-15DT	F	9.0	11.2	27.4	86	8	18.0
26.0/10.5-15DT	F	10.5	13.0	27.4	86	10	20.5
26.0/10.5-15DT SH	F	10.5	13.0	27.1	85	10	20.0
27.5/11.0-15DT SH	F	11.0	15.1	27.4	86	10-12	19.0
27.5/11-15DT	F	11.0	14.3	27.7	87	12-14	19.0
28.5/11.0-15DT	F	11.0	15.0	28.2	89	12-14	20.0
29.0/11.0-15DT	F	11.0	14.7	29.3	92	12-14	21.5
27.5/11.0-15DTW	F	13.0	15.5	27.6	87	12-14	22.0
28.5/11.0-15DTW	F	13.0	15.6	28.2	89	12-14	22.5
29.0/11.0-15DTW	F	13.0	16.0	29.1	92	12-14	23.0
27.5/11.0-15DT	L	11.0	13.8	28.0	88	10-12	21.5
29.0/11.0-15DT	L	11.0	14.0	29.3	92	10-12	22.0
27.5/10.5-15G	A	10.5	14.1	27.4	86	10-12	21.0
28.5/10.5-15G	A	10.5	14.1	28.0	88	10-12	22.0
29.0/10.5-15G	A	10.5	14.4	29.3	92	10-12	23.0
27.5/10.5-15GT	B,M	10.5	14.0	27.4	86	10-12	21.0
28.5/10.5-15GT	B,M	10.5	14.0	28.0	88	10-12	22.0
29.0/10.5-15GT	B,M	10.5	14.1	29.3	92	10-12	23.0
Open Competition							
86.0/11.0-15GT	B	11.0	15.5	27.4	86	12-14	24.0
88.0/11.0-15GT	B	11.0	15.8	28.0	88	12-14	26.5
90.0/11.0-15GT	B	11.0	15.8	28.6	90	12-14	27.5
92.0/11.0-15GT	B	11.0	16.2	29.3	92	12-14	28.5
27.5/11.0-15GT	B	11.0	15.3	27.7	87	12-14	24.5
28.5/11.0-15GT LSW	B	11.0	15.3	28.2	89	12-14	23.5
28.5/11.0-15GT	B	11.0	15.3	28.3	89	12-14	24.5
29.0/11.0-15GT LSW	B	11.0	15.8	29.3	92	12-14	24.0
29.0/11.0-15GT	B	11.0	15.7	29.3	92	12-14	25.0
27.5/11.0-15BT	D	11.0	16.2	27.7	87	12-14	25.0
28.5/11.0-15BT	D	11.0	16.3	28.3	89	12-14	25.5
29.0/11.0-15BT	D	11.0	16.2	29.3	92	12-14	26.0
88.0/11.0-15BT	D	13.5	15.8	28.0	88	12-14	26.5

← SOFTER HARDER →

TYPE "L" EC-O EC-1 EC-2 EC-3

TYPE "A" D-10 D-20 D-30 D-40

TYPE "F" SOFT MED HARD

SD-23 SD-28 SD-33 SD-35 SD-38 SD-44 SD-48 MD-50 MD-53 MD-56 MD-57 HD-65 HD-70

NOTE: All circumferences and C/L O.D.'s listed are operating measurements after break in.

NOTE: All compounds are not available in all sizes. See your nearest distributor for compounds for any given size or type race tire.

NOTE: American Racer Tires are specifically designed and compounded for racing only. They are illegal for street or highway use.

NOTE: Section widths (S.W.) are based on design rim width.

WARNING: DO NOT, UNDER ANY CIRCUMSTANCES, MOUNT AN AMERICAN RACER® RACING TIRE ON A WHEEL THAT DOES NOT MEET TIRE AND RIM ASSOCIATION STANDARDS.

NO WARRANTY POLICY

RACE TIRES AMERICA ("RTA") OFFERS RACING TIRES UNDER THE "AMERICAN RACER" BRAND FOR SALE UPON THE TERMS AND THE CONDITIONS CONTAINED IN THIS DISCLAIMER OF LIABILITY. BECAUSE OF THE MANY VARIED AND DIFFERENT CONDITIONS TO WHICH RACE TIRES ARE EXPOSED AND BECAUSE OF THE MANNER IN WHICH RACING IS CONDUCTED, RTA MAKES ABSOLUTELY **NO WARRANTY**, EXPRESSED OR IMPLIED, OF MERCHANTABILITY OR OF FITNESS FOR A GENERAL OR PARTICULAR PURPOSE IN CONNECTION WITH ANY OFFER FOR SALE OR SALE OF RACE TIRES BY RTA. **ALL RACE TIRE AMERICA AMERICAN RACER RACING TIRES ARE SOLD "AS IS."**

New, unused tires exhibiting a defect in workmanship or materials, as verified by RTA's examination, will be issued a credit equal to RTA's distributor price. To qualify for a credit, the tire must have a manufacturing date within twelve (12) months of the tire's return to RTA.

Independent dealers must establish their own prices.

RACE TIRES AMERICA®

LATE MODEL ASPHALT

TIRE SIZE	TREAD TYPE	TREAD WIDTH	SECTION WIDTH	APPROX. DIA	APPROX. CIRC.	DESIGN RIMS	WT.
26.5/8.0-15S	S	8.0	10.8	26.1	82	8	18.5
27.0/8.0-15S	S	8.0	11.2	26.7	84	8	19.0
26.0/9.0-15SH	S	9.0	11.1	26.3	83	8-9	18.0
26.0/9.0/15	S	9.0	11.5	26.8	84	8-9	18.0
26.0/10.0-15S	S	10.0	12.9	26.2	82	10	22.0
26.5/10.0-15S	S	10.0	12.9	26.4	83	10	22.5
27.0/10.0-15S	S	10.0	13.0	26.7	84	10	23.0
27.0/10.0-15SR	S	10.0	13.1	27.4	86	10	23.5
26.5/11.5-15S	S	11.5	13.5	27.0	85	10	27.0
27.0/11.5-15S	S	11.5	13.5	27.4	86	10	28.0
27.5/9.0-15T		9.0	11.6	27.7	87	8-9	21.0
26.0/8.0-15SH	S	9.0	11.1	26.3		8	18.5
8.0/26.0-15SH	S	9.0	11.1	26.3	83	8-9	18.0
8.0/26.0-15S	S	9.0	11.5	26.8	84	8-9	18.0
10.0/26.5-15S	S	10.0	13.5	26.7	84	10	21.0
10.0/27.0-15S	S	10.0	13.8	27.4	86	10	22.0

MODIFIED ASPHALT

TIRE SIZE	TREAD TYPE	TREAD WIDTH	SECTION WIDTH	APPROX. DIA	APPROX. CIRC.	DESIGN RIMS	WT.
23.5/10.0-15S	S	10.0	11.0	23.8	75	9-10	15.0
24.0/11.0-15S	S	11.5	12.0	24.5	77	10-11	18.0
24.5/10.0-15S	S	10.0	12.3	24.8	78	9-10	19.0
25.0/11.0-15S	S	11.0	12.6	24.8	79	9-12	20.0
25.0/13.5-15S	S	13.5	15.4	25.5	80	12-14	24.0
25.5/13.5-15S	S	13.5	15.8	26.1	82	13-15	25.0
26.0/13.5-15S	S	13.5	16.0	26.7	84	13-15	26.0
27.5/14.0-15S	S	14.0	16.6	27.7	87	14-16	28.0
27.5/17.0-15S	S	17.0	19.4	27.7	87	17-19	30.0

ROAD RACING 15" DIA/FORMULA V/PRO 4

TIRE SIZE	TREAD TYPE	TREAD WIDTH	SECTION WIDTH	APPROX. DIA	APPROX. CIRC.	DESIGN RIMS	WT.
21.5/5.0-15S	S	4.8	5.5	21.3	67	4-5	9.5
22.0/6.0-15S	S	5.5	6.5	22.2	70	4-5	11.0
23.5/10.0-15S	S	10.0	11.0	23.8	75	9-10	15.0
25.0/11.0-15S	S	11.0	12.6	24.8	79	9-12	20.0
26.0/13.5-15S	S	13.5	15.9	26.7	84	13-15	26.0



EC-82 EC-83 EC-84 EC-85 EC-86
 ALSO AVAILABLE
 EC-11 EC-21 EC-31 EC-41 EC-51 EC-61
 M28 M30 M32 131 132

NOTE: All circumferences and C/L O.D.'s listed are operating measurements after break in.

NOTE: All compounds are not available in all sizes. See your nearest distributor for compounds for any given size or type race tire.

NOTE: American Racer Tires are specifically designed and compounded for racing only. They are illegal for street or highway use.

NOTE: Section widths (S.W.) are based on design rim width.

WARNING: DO NOT, UNDER ANY CIRCUMSTANCES, MOUNT AN AMERICAN RACER® RACING TIRE ON A WHEEL THAT DOES NOT MEET TIRE AND RIM ASSOCIATION STANDARDS.

NO WARRANTY POLICY

RACE TIRES AMERICA ("RTA") OFFERS RACING TIRES UNDER THE "AMERICAN RACER" BRAND FOR SALE UPON THE TERMS AND THE CONDITIONS CONTAINED IN THIS DISCLAIMER OF LIABILITY. BECAUSE OF THE MANY VARIED AND DIFFERENT CONDITIONS TO WHICH RACE TIRES ARE EXPOSED AND BECAUSE OF THE MANNER IN WHICH RACING IS CONDUCTED, RTA MAKES ABSOLUTELY **NO WARRANTY**, EXPRESSED OR IMPLIED, OF MERCHANTABILITY OR OF FITNESS FOR A GENERAL OR PARTICULAR PURPOSE IN CONNECTION WITH ANY OFFER FOR SALE OR SALE OF RACE TIRES BY RTA. **ALL RACE TIRE AMERICA AMERICAN RACER RACING TIRES ARE SOLD "AS IS."**

New, unused tires exhibiting a defect in workmanship or materials, as verified by RTA's examination, will be issued a credit equal to RTA's distributor price. To qualify for a credit, the tire must have a manufacturing date within twelve (12) months of the tire's return to RTA.

Independent dealers must establish their own prices.

RACE TIRES AMERICA®

SPRINT CAR DIRT

TIRE SIZE	TREAD TYPE	TREAD WIDTH	SECTION WIDTH	APPROX. DIA	APPROX. CIRC.	DESIGN RIMS	WT.
26.0/7.0-15DT	F	7.0	10.1	26.4	83	6-8	16.5
26.0/8.0-15DT	F	8.0	10.8	26.7	84	6-8	17.0
26.0/9.5-15DT	F	9.5	12.1	26.7	84	8-10	18.0
27.5/15.0-15BT	D	14.5	16.8	27.7	87	13-15	25.5
28.0/15.0-15BT	D	14.5	16.7	28.0	88	13-15	26.0
28.5/15.0-15BT	D	14.5	16.7	28.7	90	13-15	26.5
29.0/15.0-15BT	D	14.5	17.1	29.3	92	13-15	27.0
30.0/15.0-15BT	D	14.5	17.5	29.9	94	13-15	28.0
30.5/15.0-15BT	D	14.5	17.4	30.6	96	13-15	29.0
28.0/15.0-15BT (Belted)	D	14.5	17.2	28.0	88	13-15	26.8
28.5/15.0-15BT (Belted)	D	14.5	17.5	28.7	90	13-15	27.2
29.0/15.0-15BT (Belted)	D	14.5	17.9	29.3	92	13-15	28.0
30.0/15.0-15BT (Belted)	D	14.5	17.9	29.9	94	13-15	28.2
30.5/15.0-15BT (Belted)	D	16.8	19.0	30.6	96	13-15	28.6
31.0/15.0-15BT (Belted)	D	17.2	19.2	31.2	98	13-15	29.8
32.0/16.0-15GT	D	16.0	19.6	32.5	102	15-18	32.0
102/16.0-15GT	D	16.0	19.6	32.5	102	15-18	32.0
34.0/17.0-15GT	H	17.0	20.0	33.1	104	15-18	31.5
34.0/17.0-15GTW	H	18.5	22.1	33.6	105	17-18	31.0
34.0/18.0-15GT	E	15.7	21.1	33.1	104	16-20	31.7
34.0/18.0-15GTW	T	18.5	21.9	33.6	105	16-20	33.1
30.0/13.0-15GT	B	13.0	16.9	30.3	95	13-15	29.5
31.0/13.0-15G	A	13.0	17.2	31.2	97	13-15	30.0
32.0/13.0-15GT	D	13.0	17.4	32.1	101	13-15	28.0
33.0/13.0-15GT	D	13.0	18.2	32.8	103	13-15	32.0

← SOFTER HARDER →
SD-23 SD-30 SD-33 SD-35 SD-38 SD-40 SD-44 SD-45 MD-50 MD-53 MD-56 MD-57 HD-65 HD-70
MC-1 MC-2 MC-3

ENTRY LEVEL (NON-D.O.T.)

TIRE SIZE	TREAD TYPE	TREAD WIDTH	SECTION WIDTH	APPROX. DIA	APPROX. CIRC.	DESIGN RIMS	WT.
70/235-15SW	HH(ASPH)	7.5	10.0	27.7	86	6-7	16.0
70/245-15SW	DD(DIRT)	7.5	10.0	28.0	88	6-7	17.0
60/215-14SW	R(ASPH)	7.0	8.5	25.3	79	6-7	14.0
60/215-14SW	R(DIRT)	7.0	8.5	25.3	79	6-7	14.0
60/215-13SW	CC(ASPH)	7.8	8.7	23.3	73	6-7	12.5
60/215-13SW	DD(DIRT)	7.8	8.7	23.3	73	6-7	12.5
70/205-15SW	F	7.5	10.8	26.5	83	6-8	16.0

NOTE: All circumferences and C/L O.D.'s listed are operating measurements after break in.

NOTE: All compounds are not available in all sizes. See your nearest distributor for compounds for any given size or type race tire.

NOTE: American Racer Tires are specifically designed and compounded for racing only. They are illegal for street or highway use.

NOTE: Section widths (S.W.) are based on design rim width.

WARNING: DO NOT, UNDER ANY CIRCUMSTANCES, MOUNT AN AMERICAN RACER® RACING TIRE ON A WHEEL THAT DOES NOT MEET TIRE AND RIM ASSOCIATION STANDARDS.

NO WARRANTY POLICY

RACE TIRES AMERICA ("RTA") OFFERS RACING TIRES UNDER THE "AMERICAN RACER" BRAND FOR SALE UPON THE TERMS AND THE CONDITIONS CONTAINED IN THIS DISCLAIMER OF LIABILITY. BECAUSE OF THE MANY VARIED AND DIFFERENT CONDITIONS TO WHICH RACE TIRES ARE EXPOSED AND BECAUSE OF THE MANNER IN WHICH RACING IS CONDUCTED, RTA MAKES ABSOLUTELY NO WARRANTY, EXPRESSED OR IMPLIED, OF MERCHANTABILITY OR OF FITNESS FOR A GENERAL OR PARTICULAR PURPOSE IN CONNECTION WITH ANY OFFER FOR SALE OR SALE OF RACE TIRES BY RTA. ALL RACE TIRE AMERICAN RACER RACING TIRES ARE SOLD "AS IS."

New, unused tires exhibiting a defect in workmanship or materials, as verified by RTA's examination, will be issued a credit equal to RTA's distributor price. To qualify for a credit, the tire must have a manufacturing date within twelve (12) months of the tire's return to RTA.

Independent dealers must establish their own prices.

RACE TIRES AMERICA®

MIDGET DIRT/MINI STOCK DIRT

TIRE SIZE	TREAD TYPE	TREAD WIDTH	SECTION WIDTH	APPROX. DIA	APPROX. CIRC.	DESIGN RIMS	WT.
22.5/6.0-13GT	G	6.0	7.7	21.3	67	6-7	10.5
22.5/7.0-13GT	G	7.0	8.1	21.3	67	7-8	11.5
22.5/8.0-13GT	G	8.0	9.4	21.6	68	8	12.5
22.5/9.5-13GT	G	9.5	10.3	21.6	68	8-10	14.0
22.5/9.5-13GT(71)	G	9.5	10.4	22.6	71	8-10	15.0
23.5/10.0-13GT	G	10.0	11.6	23.6	74	8-10	16.5
24.0/10.0-13GT	G	10.0	12.4	24.2	76	8-10	17.0
24.5/10.0-13GT	G	10.0	12.3	24.4	76	8-10	17.5
24.5/10.0-13GTW	G	12.0	13.5	24.4	76	10-12	18.0
25.0/10.0-13GT	G	10.0	12.7	24.8	78	8-10	17.5
25.5/10.0-13GTW	G	12.0	13.5	25.5	80	10-12	19.0
26.0/12.0-13GT	G	12.0	14.0	26.1	82	10-12	20.0

MIDGET ASPHALT

TIRE SIZE	TREAD TYPE	TREAD WIDTH	SECTION WIDTH	APPROX. DIA	APPROX. CIRC.	DESIGN RIMS	WT.
20.0/6.0-13S	S	6.0	7.4	20.1	63	5-6	8.5
20.0/8.0-13S	S	8.0	9.6	20.4	64	6-7	9.5
21.0/7.5-13S	S	7.5	8.6	21.0	66	7-8	10.5
21.0/8.5-13S	S	8.5	9.5	21.3	67	7-8	11.5
21.5/10.0-13S	S	10.0	10.0	21.8	68.5	8-10	12.5
22.5/8.0-13S	S	8.0	9.7	21.6	68	7-8	16.0
22.5/9.0-13S	S	9.0	10.1	22.0	69	8-9	17.0
9.8/22.13S	S	9.5	10.7	22.2	70	8-9	16.0
22.5/10.0-13S	S	10.0	11.4	22.6	71	8-10	17.5
23.5/10.0-13S	S	10.0	12.7	23.6	74	9-10	18.0
23.5/12.0-13S	S	12.0	14.4	23.6	74	10-12	19.0

FORMULA FORD

TIRE SIZE	TREAD TYPE	TREAD WIDTH	SECTION WIDTH	APPROX. DIA	APPROX. CIRC.	DESIGN RIMS	WT.
20.0/6.0-13S	S	6.0	7.2	20.4	64	6	10.5
22.5/7.5-13S	S	7.5	9.5	22.3	70	6	14.5

MINI CUP

TIRE SIZE	TREAD TYPE	TREAD WIDTH	SECTION WIDTH	APPROX. DIA	APPROX. CIRC.	DESIGN RIMS	WT.
15.0/6.0-8S	S	6.0	7.5	15.3	48	6-7	5.5
15.0/7.0-8S	S	7.0	8.2	15.3	48	7-8	6.5
15.0/8.0-8S	S	8.0	9.7	15.6	49	7-8	7.5

← SOFTER HARDER →
SD-23 SD-30 SD-33 SD-35 SD-38 SD-40 SD-44 SD-45 SD-48 MD-50 MD-53 MD-56 MD-57 HD-65 HD-70
M-26 M-28 M-30 M-31 M-32 M-33

NOTE: All circumferences and C/L O.D.'s listed are operating measurements after break in.

NOTE: All compounds are not available in all sizes. See your nearest distributor for compounds for any given size or type race tire.

NOTE: American Racer Tires are specifically designed and compounded for racing only. They are illegal for street or highway use.

NOTE: Section widths (S.W.) are based on design rim width.

WARNING: DO NOT, UNDER ANY CIRCUMSTANCES, MOUNT AN AMERICAN RACER® RACING TIRE ON A WHEEL THAT DOES NOT MEET TIRE AND RIM ASSOCIATION STANDARDS.

NO WARRANTY POLICY

RACE TIRES AMERICA ("RTA") OFFERS RACING TIRES UNDER THE "AMERICAN RACER" BRAND FOR SALE UPON THE TERMS AND THE CONDITIONS CONTAINED IN THIS DISCLAIMER OF LIABILITY. BECAUSE OF THE MANY VARIED AND DIFFERENT CONDITIONS TO WHICH RACE TIRES ARE EXPOSED AND BECAUSE OF THE MANNER IN WHICH RACING IS CONDUCTED, RTA MAKES ABSOLUTELY NO WARRANTY, EXPRESSED OR IMPLIED, OF MERCHANTABILITY OR OF FITNESS FOR A GENERAL OR PARTICULAR PURPOSE IN CONNECTION WITH ANY OFFER FOR SALE OR SALE OF RACE TIRES BY RTA. ALL RACE TIRE AMERICA AMERICAN RACER RACING TIRES ARE SOLD "AS IS."

New, unused tires exhibiting a defect in workmanship or materials, as verified by RTA's examination, will be issued a credit equal to RTA's distributor price. To qualify for a credit, the tire must have a manufacturing date within twelve (12) months of the tire's return to RTA.

Independent dealers must establish their own prices.

RACE TIRES AMERICA®

MINI MODIFIED, MINI SPRINT, MINI STOCK, PRO-4 ASPHALT

TIRE SIZE	TREAD TYPE	TREAD WIDTH	SECTION WIDTH	APPROX. DIA.	APPROX. CIRC.	DESIGN RIMS	WT.
20.0/8.0-13S	S	8.0	9.6	20.4	64	6-7	9.5
21.0/7.5-13S	S	7.5	8.6	21.0	66	7-8	10.5
21.0/8.5-13S	S	8.5	9.5	21.3	67	7-8	11.5
22.5/8.0-13S	S	9.5	10.8	22.2	70	7-9	14.7
22.5/8.0-13SH	S	8.2	10.2	21.3	67	7-9	14.0
22.5/9.0-13S	S	9.0	10.1	22.0	69	8-9	17.0
22.5/10.0-13S	S	10.0	11.5	22.6	71	9-10	16.0
23.5/7.5-13S	S	7.5	9.8	23.6	74	7	14.5
23.5/10.0-13S	S	10.0	11.3	23.6	74	9-12	16.0
23.5/10.0-15S	S	10.0	11.0	23.8	75	9-10	15.0
26.0/8.0-15SH	S	8.0	10.8	26.1	82	8	18.5

MICRO SPRINT

TIRE SIZE	TREAD TYPE	TREAD WIDTH	SECTION WIDTH	APPROX. DIA.	APPROX. CIRC.	DESIGN RIMS	WT.
18.0/6.0-10GT	G	6.0	7.9	18.1	57	5-6	8.0
18.0/8.0-10GT	G	8.0	9.4	18.1	57	6-8	9.0
18.0/10.0-10GT	G	10.0	11.0	18.5	59	8-10	11.0
19.0/8.0-10GT	G	8.0	10.1	19.1	60	6-8	10.0
19.0/10.0-10GT	G	10.0	11.7	19.4	61	8-10	11.5
20.0/8.0-10GT	G	8.0	10.1	20.1	63	6-8	10.0
20.0/10.0-10GT	G	10.0	12.1	20.1	63	8-10	12.0
20.5/10.0-10GT	G	10.0	12.1	20.7	65	8-10	12.5
20.5/10.0-10GTW	G	11.0	12.3	21.0	66	10	13.0
21.0/10.0-10GT	G	10.0	11.8	21.3	67	8-10	12.5
21.0/10.0-10GTW	G	11.0	12.3	21.6	68	10	13.0
21.5/10.0-10GTW	G	12.0	12.9	22.1	69.5	10	14.0
70.0/13.0-10GTW	G	13.5	15.0	22.1	69.5	13-15	16.0

CAGE KART

TIRE SIZE	TREAD TYPE	TREAD WIDTH	SECTION WIDTH	APPROX. DIA.	APPROX. CIRC.	DESIGN RIMS	WT.
16.0/8.5-8GT	C	8.5	10.2	16.2	51	8	9.0

← SOFTER HARDER →

SD-23 SD-30 SD-33 SD-35 SD-38 SD-40 SD-44 SD-45 SD-48 MD-50 MD-53 MD-56 MD-57 HD-65 HD-70
M-26 M-28 M-30 M-31 M-32 M-33

NOTE: All circumferences and C/L O.D.'s listed are operating measurements after break in.

NOTE: All compounds are not available in all sizes. See your nearest distributor for compounds for any given size or type race tire.

NOTE: American Racer Tires are specifically designed and compounded for racing only. They are illegal for street or highway use.

NOTE: Section widths (S.W.) are based on design rim width.

WARNING: DO NOT, UNDER ANY CIRCUMSTANCES, MOUNT AN AMERICAN RACER® RACING TIRE ON A WHEEL THAT DOES NOT MEET TIRE AND RIM ASSOCIATION STANDARDS.

NO WARRANTY POLICY

RACE TIRES AMERICA ("RTA") OFFERS RACING TIRES UNDER THE "AMERICAN RACER" BRAND FOR SALE UPON THE TERMS AND THE CONDITIONS CONTAINED IN THIS DISCLAIMER OF LIABILITY. BECAUSE OF THE MANY VARIED AND DIFFERENT CONDITIONS TO WHICH RACE TIRES ARE EXPOSED AND BECAUSE OF THE MANNER IN WHICH RACING IS CONDUCTED, RTA MAKES ABSOLUTELY **NO WARRANTY**, EXPRESSED OR IMPLIED, OF MERCHANTABILITY OR OF FITNESS FOR A GENERAL OR PARTICULAR PURPOSE IN CONNECTION WITH ANY OFFER FOR SALE OR SALE OF RACE TIRES BY RTA. **ALL RACE TIRE AMERICA AMERICAN RACER RACING TIRES ARE SOLD "AS IS."**

New, unused tires exhibiting a defect in workmanship or materials, as verified by RTA's examination, will be issued a credit equal to RTA's distributor price. To qualify for a credit, the tire must have a manufacturing date within twelve (12) months of the tire's return to RTA.

Independent dealers must establish their own prices.

RACE TIRES AMERICA®

D.O.T. STREET TIRES

SIZE & TYPE	TYPE	T&RA APPROVED RIMS	RIM WIDTHS	C/L O.D.	S.W.	T.A.W.	CIRC.	WT.
P215/60D-13(4)	CC	B	6-7	23.6	8.7	6.5	74	15.0
P215/60D-13(4)	EE	B	6-7	22.9	8.5	6.5	72	15.0
P235/60D-13(4)	CC	B	7-8	23.8	9.5	7.5	75	16.0
P235/60D-13SH(4)	CC	B	7-8	23.2	9.5	7.5	73	16.0
G-60-15(4)	BB	J	7-8	26.4	10.0	8.0	83	20.0
G-60-15SH(4)	BB	J	7-8	26.0	10.0	8.0	82	20.0
L-60-15(4)	BB	J	7-8	27.7	10.8	9.5	87	22.0
P295/50D-15(4)	BB	J	9-10	26.7	12.2	10.0	84	22.5
P225/70D-15SH(4)	GG	J	6-7	26.8	9.1	7.0	84	20.0
P225/70D-15(4)	GG	J	6-7	27.0	9.1	7.0	85	20.0
P225/70D-15(4)	HH	J	6-7	27.0	9.5	7.3	85	19.0
P235/70D-15(4)	HH	J	6-7	27.7	10.0	7.5	86	20.0
P245/70D-15(4)	CC	J	7-8	27.7	10.2	7.0	87	21.0
P245/70D-15(4)	DD	J	7-8	27.7	9.9	7.0	87	20.0
P265/60D-15(4)	CC	J	7-9	28.0	11.0	7.5	88	21.0
P265/60D-15(4)	DD	J	7-9	28.0	10.7	8.0	88	22.0
P265/60D-15SH(4)	DD	J	7-9	27.7	10.9	7.5	87	21.0
P265/60D-15(4)	GG	J	7-9	27.4	10.5	8.0	86	22.5
P265/60-15 SH(4)	GG	J	7-9	27.1	10.6	8.0	85	22.0
P285/60D-15(4)	CC	J	8-10	28.3	11.7	9.0	89	23.0
P285/60D-15(4)	DD	J	8-10	28.3	11.7	9.5	89	23.0
P285/60D-15SH(4)	DD	J	8-10	27.7	11.7	9.5	87	23.0
P285/60D-15(4)	GG	J	8-10	27.7	11.6	10.0	87	25.0
P285/60D-15SH(4)	GG	J	8-10	27.4	11.7	10.0	86	25.0
P285/65D-15(4)	FF	J	8-10	29.3	11.6	8.5	92	23.0
P305/60D-15(4)	FF	J	9-10	29.3	12.6	10.0	92	25.0
P305/60D-15SH(4)	FF	J	9-10	28.6	12.8	10.0	90	25.0

Compounds Available: Asphalt, Dirt

There are other compounds D.O.T. approved. Check with your distributor for special requirements.

Note: American Racer/McCreary D.O.T. Street Tires are designed to be used on rims that meet T&RA specifications and tolerances.

NOTE: All circumferences and C/L O.D.'s listed are operating measurements after break in.

NOTE: All compounds are not available in all sizes. See your nearest distributor for compounds for any given size or type race tire.

NOTE: American Racer Tires are specifically designed and compounded for racing only. They are illegal for street or highway use.

NOTE: Section widths (S.W.) are based on design rim width.

WARNING: DO NOT, UNDER ANY CIRCUMSTANCES, MOUNT AN AMERICAN RACER® RACING TIRE ON A WHEEL THAT DOES NOT MEET TIRE AND RIM ASSOCIATION STANDARDS.

NO WARRANTY POLICY

RACE TIRES AMERICA ("RTA") OFFERS RACING TIRES UNDER THE "AMERICAN RACER" BRAND FOR SALE UPON THE TERMS AND THE CONDITIONS CONTAINED IN THIS DISCLAIMER OF LIABILITY. BECAUSE OF THE MANY VARIED AND DIFFERENT CONDITIONS TO WHICH RACE TIRES ARE EXPOSED AND BECAUSE OF THE MANNER IN WHICH RACING IS CONDUCTED, RTA MAKES ABSOLUTELY NO WARRANTY, EXPRESSED OR IMPLIED, OF MERCHANTABILITY OR OF FITNESS FOR A GENERAL OR PARTICULAR PURPOSE IN CONNECTION WITH ANY OFFER FOR SALE OR SALE OF RACE TIRES BY RTA. ALL RACE TIRE AMERICA AMERICAN RACER RACING TIRES ARE SOLD "AS IS."

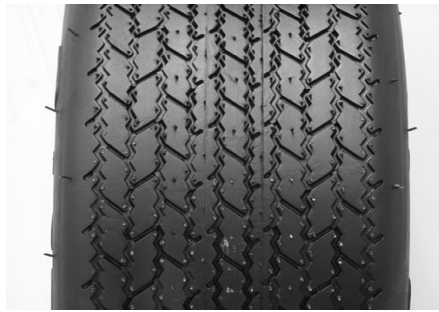
New, unused tires exhibiting a defect in workmanship or materials, as verified by RTA's examination, will be issued a credit equal to RTA's distributor price. To qualify for a credit, the tire must have a manufacturing date within twelve (12) months of the tire's return to RTA.

ALL AMERICAN RACER RACING TIRES, INCLUDING "D.O.T." MARKED TIRES, ARE DESIGNED FOR RACING PURPOSES ONLY AND ARE NOT TO BE OPERATED ON PUBLIC STREETS, ROADS, OR HIGHWAYS, American Racer "D.O.T." marked tires have passed D.O.T. minimum requirements for sidewall identification, labeling, and performance; however, racing tires have reduced skid depth or soft compounds designed for racing on dirt or asphalt closed oval tracks. Racing compounds and tread depths give reduced tread life and are not suitable for highway or street use.

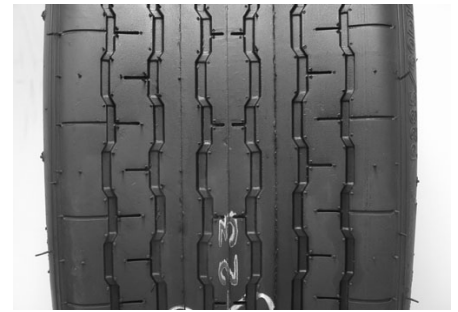
Independent dealers must establish their own prices.



BB



CC



DD



EE



FF



GG



HH



A



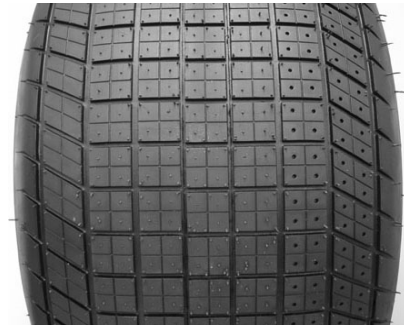
B



C



D



E



F



G



H



L



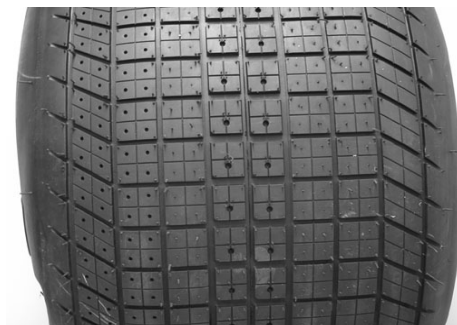
M



R



S



T

RACE TIRES AMERICA® DISTRIBUTORS

CALL THE DISTRIBUTOR NEAREST YOU FOR PRICES, RECOMMENDATIONS AND DEALER INQUIRES

Boubin Tire Company
Independence, **Iowa**
319-334-6058
800-722-3847
FAX 319-334-4517 Office
FAX 319-334-6968 Warehouse
E-mail order@boubin.com
Website www.boubin.com

Tony Rose
Authorized agent for
Kentucky and Indiana
317-823-2475
E-mail american_tireman@yahoo.com

Lias Tire, Inc.
Indiana, **Pennsylvania**
724-463-0214
800-638-7028
FAX 724-463-1433
E-mail liastire@hotmail.com
Website www.liastire.com

Jack McCoy Enterprises, Inc.
Modesto, **California**
209-521-5656
FAX 209-527-0042
E-mail mccoys@racetireswest.com

Harris Race Car Parts, Ltd.
12 Bancroft Cres, Glendene
Auckland 7, **New Zealand**
649-818-9991
0800-366-225
FAX 649-818-2108
E-mail hcrp@ihug.co.nz

American Tire & Racing Services
Unit 11, 62 Newton Road
Wetherill Park, **Australia**
610-29-756-6001
FAX 610-29-756-6008
E-mail mark@AMERICANracingtires.com

American Race Tires South
Powell, **Tennessee**
865-494-8484
FAX 865-494-8484
E-mail AMERICANRACERS@aol.com

Day Motorsports Inc.
Tyler, **Texas**
1-800-543-6238
903-593-9815
FAX 903-593-8453
E-mail info@daymotorsports.com
Website www.daymotorsports.com

Dave Lind Racing
Norfolk, **Massachusetts**
508-384-3140
800-562-9527
FAX 508-384-7240
E-mail davelindracing@verizon.net

Michigan Race Tire Warehouse
Adrian, **Michigan**
517-265-6411
FAX 517-263-2753

Jimmy Smith Racing Tires, Inc.
Marietta, **Georgia**
770-924-9525
FAX 770-924-8162
E-mail americanjsrt44@aol.com

Race Car Product Sales, Ltd.
Coaldale, **Alberta, Canada**
403-345-4726
FAX 403-345-3929
E-mail parts@racecarproducts.ca
Website www.racecarproducts.ca

Grisdale Racing Products
Dundas, **Ontario, Canada**
905-627-0224
Fax 905-627-1119
E-mail tj@grisdale.com
Website www.grisdale.com

Race Tires America
1545 Washington Street
Indiana, PA 15701
724-349-7210
Fax 724-349-6497
E-mail info@americanraceronline.com

Please visit our Website www.americanraceronline.com



DECLARATION IN FAVOR OF COMPETITION

WE DECLARE, that for the promotion and betterment of competition, and all that it stands for in the USA, we support the following:

1. Spec tire or track tire rules will be established based upon enforceable, objective requirements for tires to be used at all dirt motor sports events. Such requirements shall be based upon actual tire size dimensions, tread hardness, and other non-manufacturer specific criteria.
2. Rules for all dirt racing events shall, without discrimination, permit any tire manufacturer whose products meet the objective tire requirements to provide tires for such events. Sanctioning companies, promoters and track owners will not establish any rule, policy, or practice mandating or providing for the use of a single manufacturer's tire.
3. Sanctioning companies, race promoters, and track owners, as applicable, will independently establish non-discriminatory compensation rates for any and all tire suppliers who supply race tires meeting the objective requirements, which will provide compensation to the sanctioning company, promoters and their affiliated tracks for purposes of offsetting the cost of driver point funds and driver amenities. In each event, the compensation rates shall be in proportion to each supplier's share of actual tire sales to racers and not on a lump sum or flat fee basis.
4. Tire suppliers will make reasonable and appropriate changes to operations and their racetire distribution network to provide adequate inventories and company representation at dirt racing events.

The single tire, single manufacturer formula used so long ago in establishing spec tire rules was instrumental in allowing racers to achieve a level of competitive parity on the track. However, that model has evolved into a scheme allowing a single manufacturer to capture and monopolize the market for dirt race tires. It is time to recognize that the original objectives of spec tire rules can be achieved without creating monopolistic power in a single supplier by allowing any qualified tire supplier to sell its product to racers at dirt racing events, and by letting the racers make the choice based on quality, performance, price and personal preference.

